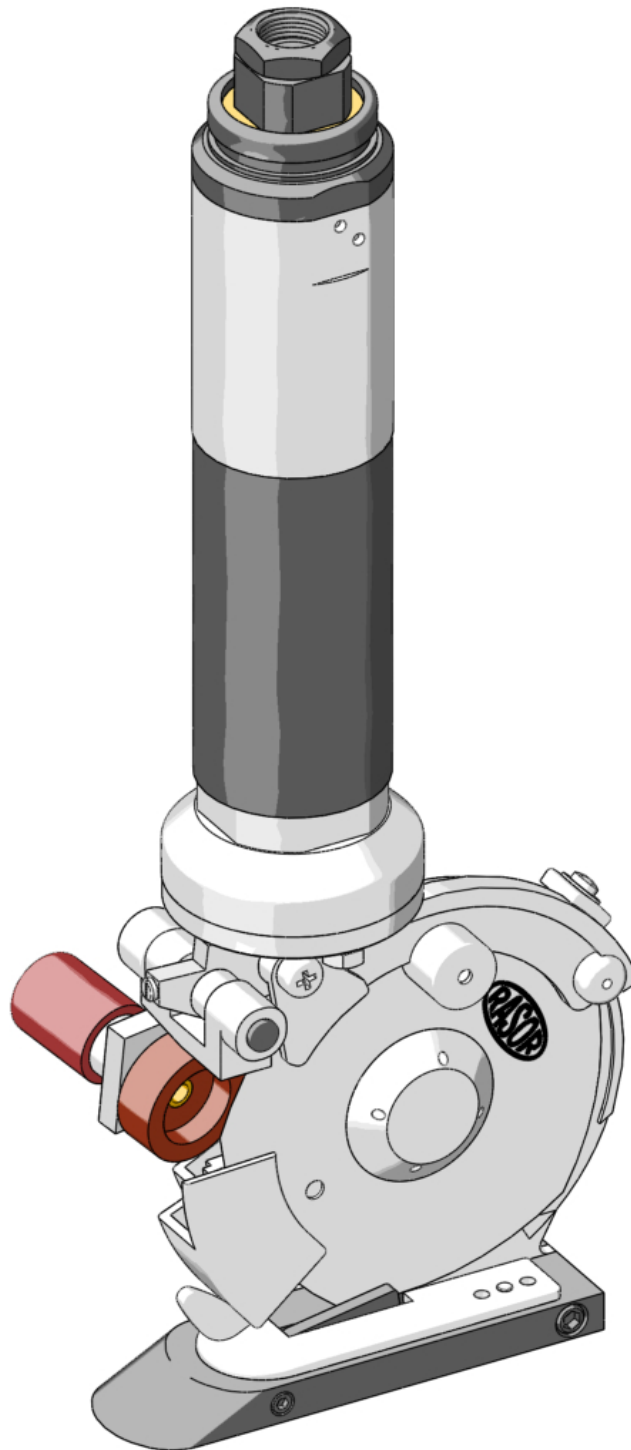


USE MANUAL

english



CUTTING UNIT MOD. FP861V

SERIAL NUMBER



dal 1946

ED.1-02/12

Rasor® Elettromeccanica S.r.l. was established in Milan in 1946 by the two promoting partners Spinelli and Ciminaghi. For more than sixty years it has been producing automatic cutting systems, cutting units for textile applications and electric and pneumatic cutters.



dal 1946

Initially considered as a point of reference for cutting systems in the textile applications, the Rasor® products are nowadays widely used in other fields: chemical, automotive, nautical and sport sectors and in furniture manufacturing.

Rasor® can rely on the professional continuity of three generations, thanks to the precious support of the promoting partner, to his passion, dedication and great experience of seventy years.

The main characteristic of Rasor® is that each working phase, starting from the manufacturing of the product up to its packing and delivery is carried out in Rasor® premises by qualified operators who have professionally grown up following the spirit of the company and of its founders. This ensures the high quality which Rasor® has always considered as essential since the beginning of its activity.

Following the innovative spirit mentioned above, our company is constantly focused on the improvement of the product quality, on the study and development of new materials and technologies.

ACKNOWLEDGMENT

Dear Customer,
thank you for choosing a Rasor® Elettromeccanica S.r.l. product.

Rasor® has been a reference point in the field of cutting systems in the textile, clothing, furniture, tailoring, sport, chemical, automotive, nautical and insulating material sectors for years. Its production has been always synonymous with reliability attested by many of satisfied customers.

Rasor® quality system supervises all the company activities in order to provide the Customer with a service that meets its needs and expectations in terms of product quality, delivery reliability and stock of finished products.

All the parts of the devices have been planned and produced to guarantee an optimum performance. In order to keep the high quality level and the long reliability of the Rasor® products, it is recommended to use only original spare parts and to contact the head office for any maintenance work.

1. GENERAL SAFETY RULES



This manual is an integral part of cutting unit FP861V and must be carefully read before using it since it gives important indications with regards to its safe installation, use and maintenance. Keep it with care.



Before using cutting unit FP861V, read carefully the following general safety rules.

- **PACKAGING.**
After taking off the packaging make sure that the cutting unit is intact. In case of doubt do not use it and contact an authorized service centre. Do not leave pieces of packaging (plastic bags, foam polystyrene, boxes, etc.) within the reach of children or disabled persons since they are potential sources of danger.
- **AVOID DANGEROUS ENVIRONMENTS.**
- **KEEP CHILDREN AWAY.**
Unauthorized persons, in particular children, must be kept away from the working area.
- **KEEP THE WORKING AREA ALWAYS IN ORDER.**
The workplace must always be kept in order and well lightened.
- **ALWAYS USE CUTTING UNIT FP861V PROPERLY.**
Use the cutting unit only to carry out the works they have been designed for; do not use them improperly.
- **OBSERVE THE USE OF THE TOOLS.**
Do not cut excessively thick materials and always check blade conditions.
- **AVOID ACCIDENTAL STARTINGS.**
Before connecting cutting unit FP861V, make sure that everything is installed properly.
- **CLOTHING.**
Do not use large clothes or accessories that might get stuck in the moving parts.
- **GOGGLES AND PROTECTIVE METAL MESH GLOVES.**
Always use goggles, protective metal mesh gloves approved by Rasor® during use and maintenance operations (according to UNI EN 388:2004 standard).
- **SPARE PARTS.**
During maintenance and replacement operations use only original spare parts. Blade maintenance must be only performed by Rasor® technicians.
- **INSTALLATION.**
Any installation that is not in conformity with these specifications could jeopardize your safety and cancels the warranty.

Informative letter

The installer and the maintenance man must know the content of this manual. Although the main features of the machine described in this manual are not subject to change, **Rasor® Elettromeccanica S.r.l.** reserves the right to modify the components, details and accessories it deems necessary to improve the machine or to meet manufacturing or commercial requirements at any time and without being obliged to update this manual immediately.



WARNING



ALL RIGHTS ARE RESERVED ACCORDING TO THE INTERNATIONAL COPYRIGHT CONVENTIONS,

The reproduction of any part of this manual, in any form, is forbidden without the prior written authorization of Rasor® Elettromeccanica S.r.l.

The content of this guide can be modified without prior notice. Great care has been taken in collecting and checking the documentation contained in this manual to make it as complete and comprehensible as possible.

Nothing contained in this manual can be considered as a warranty, either expressed or implied - including, not in a restrictive way, the suitability warranty for any special purpose. Nothing contained in this manual can be interpreted as a modification or confirmation of the terms of any purchase contract.

Rasor® Elettromeccanica S.r.l. machines have not been conceived to work in areas at risk of explosions and at high risk of fire.

In case of damage or malfunction, cutting unit FP861V must not be used until the Customer Care Technical Service has repaired them.

Customer Care Technical Service



dal 1946

For any information, please contact
RASOR®ELETTROMECCANICAS.r.l.
Via V. Caldesi, 6; 20161, MILANO (MI) - ITALY
Phone: +39.02.66221231; Fax: +39.02.66221293
e-mail: info@rasor-cutter.com
web: www.rasor-cutters.com

WARNING

The original configuration of the cutting unit must not be changed at all.

On receiving the machine make sure the supply corresponds to what has been ordered.

In case of non-compliance immediately inform Rasor®.

Also make sure the cutting unit has not been damaged during transport.

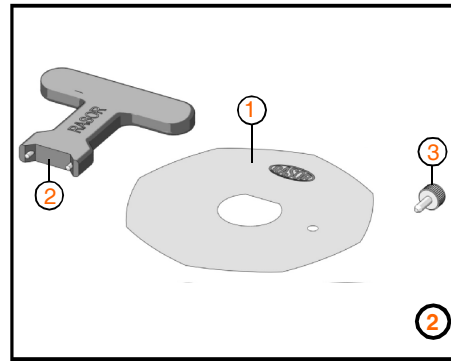


dal 1946

2. TRANSPORT AND PACKING

The cutting unit is delivered in a cardboard box which contains there are various options. The code of the ordered product and its serial number are indicated outside the package (see picture 1). The following accessories are contained in a bag inside the package (see picture 2):

- 1) HSS steel polygonal blade;
- 2) Butterfly key for blade nut disassembly;
- 3) Drift for blade disassembly.

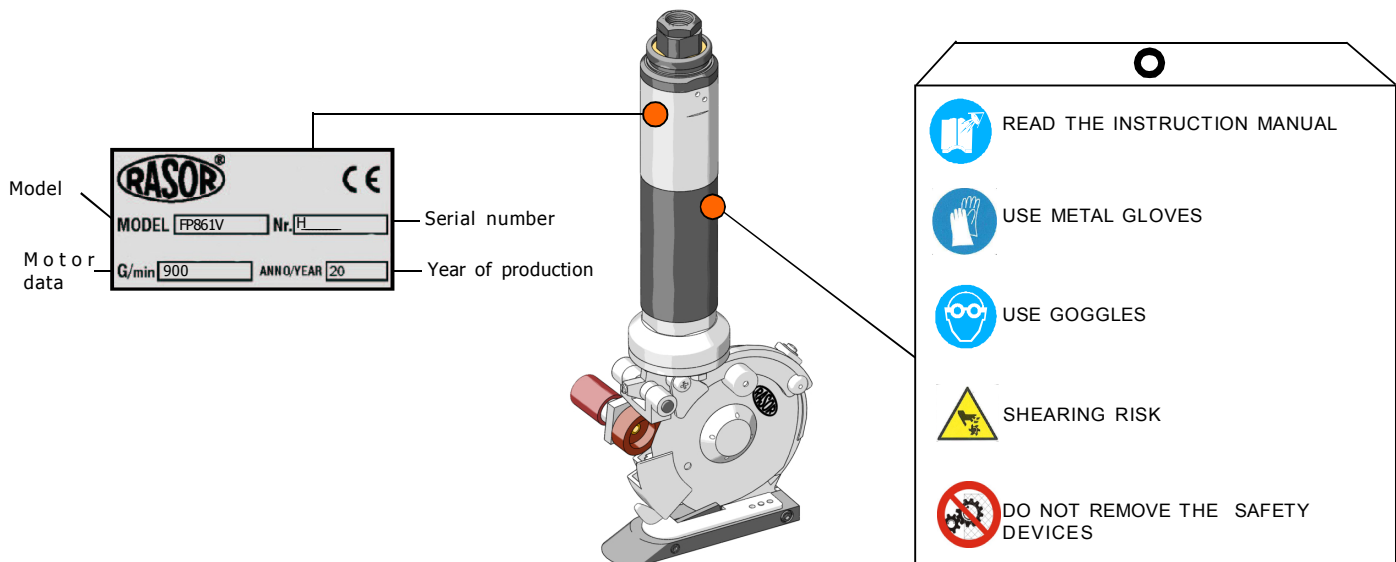


3. PLATE DATA

The manufacturer's identification and 2006/42/EC STANDARD conformity plate (see picture below) is located on the front part of the cutting unit.

The plate must not be removed at all, even if the machine is resold. Always refer to the serial number (written on the plate itself) when contacting the manufacturer.

Several safety warnings are printed on a card which is applied to the cutting unit feeding cable; such warnings must be strictly followed by everyone dealing with the machine. **The company is not to be held responsible for damage to property or accidents to people which might occur if the above-mentioned warnings are not observed. In such a case, the operator is the only person responsible.**



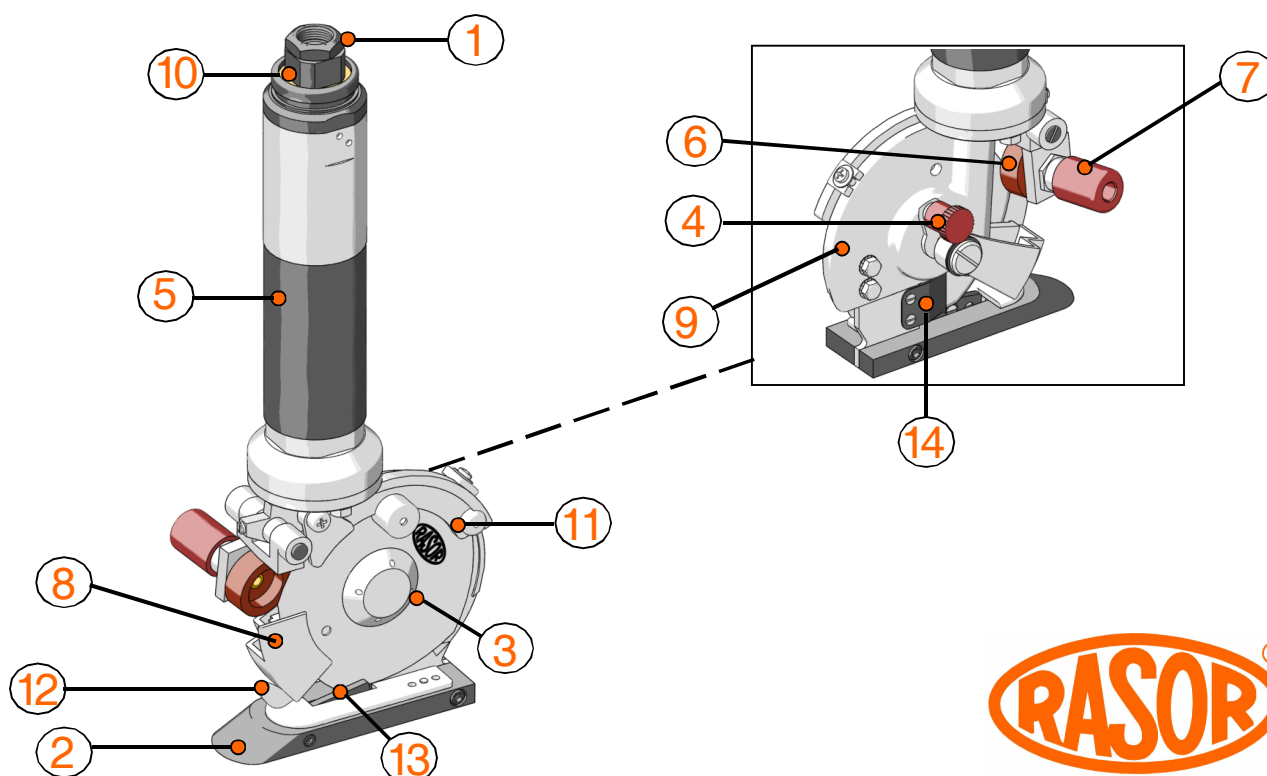
4. PRODUCT DESCRIPTION

The fixture described in this manual is a pneumatic cutting unit model FP861V which can be assembled on automatic machines (e.g. spreaders, computerized cutting, etc...) by means of a proper bracket. Thanks to a reference pin on the front part and of an effective cutting system with polygonal blade, this cutting unit can be used for many applications: in particular, this cutting unit has been designed to cut hard materials such as moquette, polymeric materials, fiber glass, insulating materials and leather (even rawhide).

One special feature of cutting FP861V is its ability to sharpen the blade in each moment without disassembling it by means of a grinding wheel mounted on the cutting unit head. After carrying out this operation, it is possible to start cutting again. The pneumatic cutting unit is provided with a threaded connection to the majority of the air pipes. The turbine, perfectly balanced, with a high number of revolutions and totally free of maintenance, reduces the vibrations and the noise to the minimum. The cutting unit can be used to cut damp or wet materials and therefore particularly recommended in tannery, dyeworks, etc... The use of compressed air as source of energy allows working continuously without problems of heating or motor overload. The mechanical parts are made up of steel, high resistant bronze and aluminium and require a lubrication after many working hours.

Device components

1	1/4" gas connection for the air connector	8	Front guard
2	Aluminuj base covere with Teflon®	9	Motor support
3	Polygonal blade	10	Silencer
4	Greaser	11	Rear guard
5	Pneumatic motor	12	Reference drift
6	Sharpener	13	Hard metal counterblade
7	Sharpening push button	14	Spring locking the thread



5. TECHNICAL FEATURES

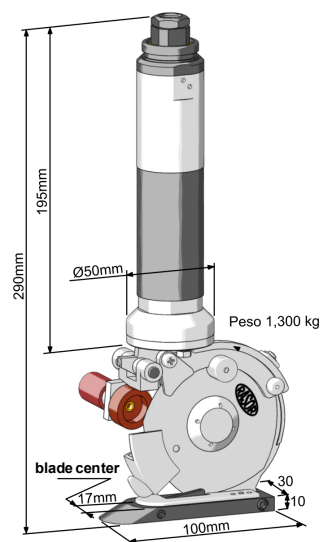
Pneumatic scissors FP861V features

Blade diameter	86 mm with hard-metal counterblade
Blade speed	900 rev/min
Cutting working depth	about 25 mm
Power	380 W with max. pressure
Working pressure	max. 6 bar
Weight	1100 g
Weight with package	2000 g
Air consumption	9 litres/sec.
Minimum luminosity for working operations	LUX 200
Vibrations at the start up	< 2,5 m/s ²
Temperature	0 ~ 55°C
Humidity	10 ~ 95% without condensate

The technical data are only indicative and they can be changed without notice.

Features of the available blades

86THSS	8 side blade Ø 86 mm, H.S.S. steel
86PHSS	5 side blade Ø 86 mm, H.S.S. steel
86THSSTN	8 side blade Ø 86 mm, H.S.S. steel coated with titanium
86THSSTF	8 side blade Ø 86 mm, H.S.S. steel covered with Teflon
86PHSSTN	5 side blade Ø 86 mm, H.S.S. steel covered with Teflon
86TMD	8 side blade Ø 86 mm, made of integral hard metal (Widia)
86PHSSTF	5 side blade Ø 86 mm, H.S.S. steel covered with Teflon



6. NOISE LEVEL

The maximum acoustic pressure level emitted by cutting unit FP861V is about 60 dB (A). Noise tests have been carried out in compliance with Standard ISO 11202. The device noise levels, measured at different distances (without any sound wave filtering system), vary in the extent of few db (A). The noise level has been detected with the silencer supplied with the fixture assembled on the exhaust. The silencer must never be removed.

NOTE

It is advisable for cutting unit FP861V owners to verify the compliance with the standard concerning safety of workers: refer to the Local Law. The use of ear protecting devices is compulsory.

7. FIELD OF APPLICATION

Cutting unit FP861V has been designed, manufactured and assembled to cut textile or technical fabrics, with the exception of metal, plastic or wood, by means of rotary blades. This equipment must not work:

- in areas prone to explosions;
- in presence of fine dust or corrosive gases;
- to cut plastic, metal and wooden materials.

It is forbidden to use cutting unit FP861V for purposes different from the above-mentioned ones.



dal 1946

8. USE WARNINGS

We recommend following the indications below in order to always work in safety conditions.

- All the operations must be carried out complying strictly with the safety rules of the country where the fixture is sold.
- It is **STRICTLY FORBIDDEN** to smoke during the installation or adjustment operations of the cutting unit.
- The Customer undertakes to comply with and make his staff observe all the rules and regulations in force concerning safety, prevention of accidents and health in the work place. Therefore, the Customer assumes the responsibility to strictly follow all the rules and regulations in force, as well as the special provisions in force in sport and public installations the Customer declares to know after receiving all the relative necessary information.
- The cutting unit works also without their safety protective device. **This protective device must NEVER be removed.**
- Always check the resistance of the material to be cut and the kind of blade which is being used.
- The Customer shall equip his own personnel with all the individual safety protections for the execution of the works, as well as with the ones which might be prescribed by the Manufacturer due to specific danger conditions of the plant or of the area where the personnel must work.
- Do not carry out any adjustment while the blade is working.
- Always pay attention to the position of the air pipe to prevent it from being cut or damaged by the blade.
- It is possible to assemble cutting unit FP861V on machines O.E.M. only if their original structure is not modified. Otherwise, the intervention must be certified by Rasor®.

9. RESIDUAL RISKS

Even though the cutting unit is safe, operators must pay attention to preserve their and other people's safety.

- ⊗ The cutting blade can work even when the protective device is disassembled.



dal 1946

10. INSTALLATION AND USE

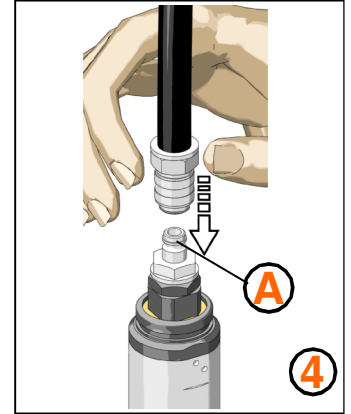
To install and use the cutting unit do as follows:

- 1) Fix the cutting unit to the machine by means of a flat or angle bracket to mount on the upper part of the motor support of the unit.

NOTE

The cutting unit can be installed in any position or angle: vertical, upside down, lateral. The aluminium base does not have to touch the machine table.

- 2) Lay down the material to be cut;
- 3) Connect the air hose to quick connection "A" (not supplied) (see picture 4);
- 4) Set the pressure gauge (option) to 6 bar;
- 5) Put the material on the cutting base (see picture 5);
- 6) Adjust the moving front protection according to the thickness of the material to cut;
- 7) Enable the air remotely and carry out the cutting operation.

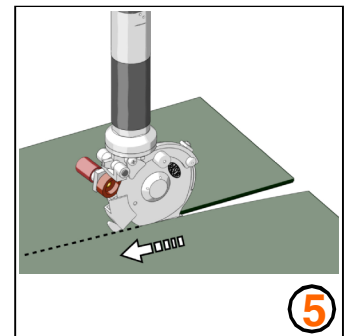


NOTE

It is possible to use cutting unit FP861V both keeping it fixed and making the material slide and viceversa. It is important to keep the material to cut as stretched as possible to prevent it from curling

WARNING

Do not use the two bolts which connect the motor to the cutting part to fix cutting unit FP861V, otherwise the motor shaft could break. In this case the warranty will be void.



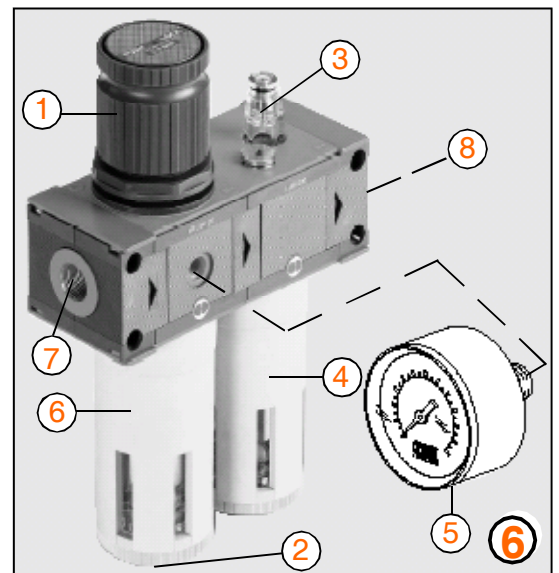
11. AIR PRESSURE GAUGE (OPTION)

The cutting unit must be necessarily fed with lubricated air with a pressure of 4-6 bar.

Razor® offers, as option, a reduction unit filter with a pressure gauge already calibrated with the quantity of oil to be delivered as option.

The unit shown also in picture 6 is made up of:

- 1 - pressure reducer;
- 2 - valve to drain the condensate;
- 3 - drip-feed oiler unit;
- 4 - oil tank;
- 5 - pressure gauge;
- 6 - condensate tank;
- 7 - pipe fitting to connect the quick connection to the network;
- 8 - pipe fitting to connect the quick connection to the scissor.

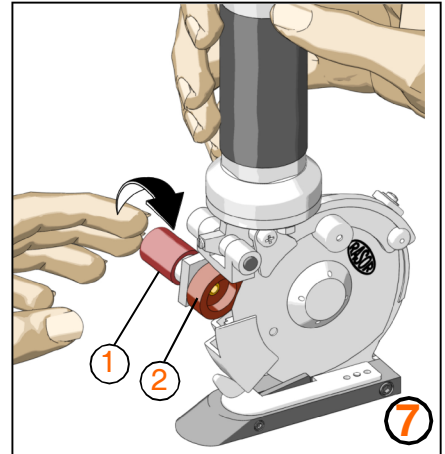


For the use and maintenance read the instruction sheet supplied with the filter.

12. BLADE SHARPENING

After using the cutting unit for some hours without interruption, or if its cutting capacity is reduced, it is necessary to sharpen the blade.

To carry out this operation, start the blade and press sharpener "2" on the blade itself (by means of push button "1", as shown in picture 7) for 3-4 seconds. Repeat this operation 2-3 times. Check periodically that the grinding wheel is not worn or dirty. If it is worn or its surface is irregular, replace it.



EN
10

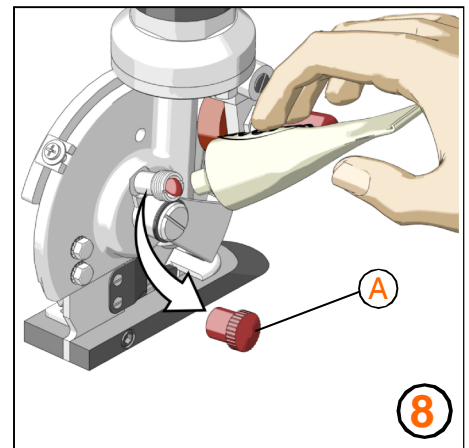
13. LUBRICATION

Every 3-4 working days, it is necessary to lubricate the gear pair. In order to carry out this operation, remove protective plug "A" located on the head of the cutting unit and fill it with Razor lubricating grease. Screw plug "A" again a few turns. Screw plug "A" a few turns every 2-3 working days (see picture 8).

Once the plug is screwed until the end, fill it again.

WARNING 

There must not be stains of grease or oil on the blade.



RASOR[®]

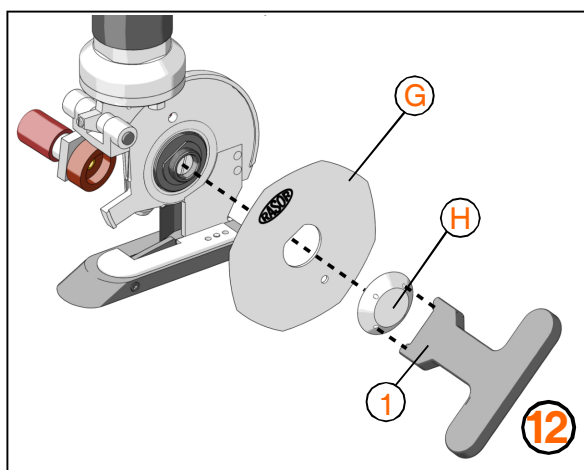
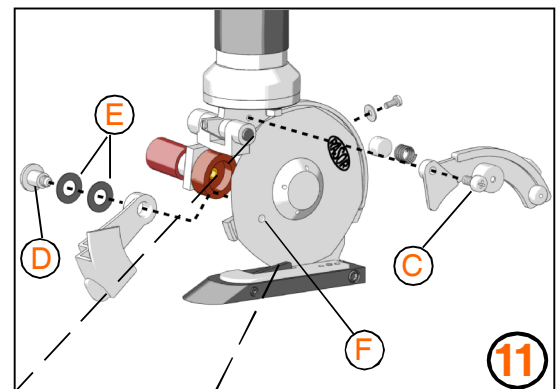
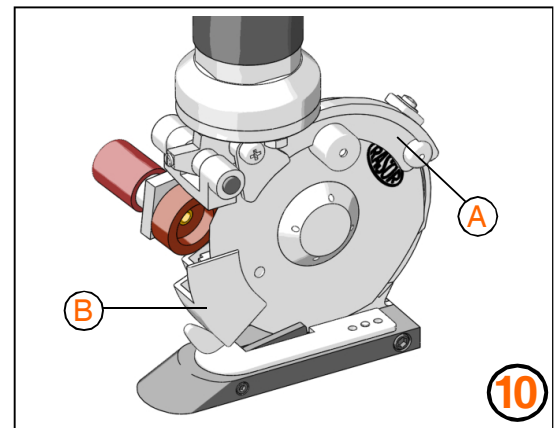
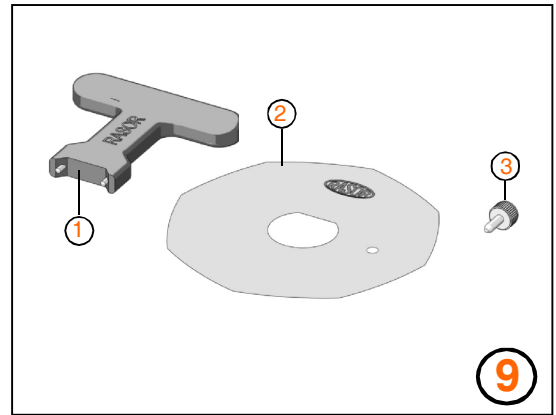
dal 1946

14. BLADE REPLACEMENT

If the blade is no more able to cut (even after repeating the sharpening operation several times) it is necessary to replace it. In order to carry out this operation, use butterfly key "1" and drift "3" locking the blade (shown in picture 9).

In order to replace the blade, proceed as follows:

- 1) Use some protective gloves in compliance with the Local Law of the Country where the cutting unit is to be used (use of personal protection devices);
- 2) Remove fixed safety protection "A" (see picture 10) by unscrewing the cross screw "C" with a screwdriver (not supplied by the manufacturer), as shown in picture 11.
Remove the moving front safety protection "B" (see picture 11) by unscrewing pin "D" and taking out the two washers "E" as shown in picture 11.
- 3) Insert drift "3" (see picture 11) into hole "F" in order to lock the blade (the hole in the blade must correspond to the hole in the structure).
- 4) Use butterfly key "1" in order to unscrew nut "H" and remove blade "G" (see picture 12).
- 5) Replace the worn blade with the new one "2", being careful to center the blade on the shaft, in the correct position, and remember to assemble it so that the operator can see the writing "Rasor".
- 6) Assemble all the components again and sharpen the blade.



15. TROUBLESHOOTING

✗ PROBLEM	➔ SOLUTION
The fabric is not cut or it gets stuck between the blade and the counterblade	Check the counterblade integrity
	Check the kind of fabric
	Sharpen the blade
	Check the fabric thickness
	Check the compatibility between blade and fabric
	Make sure that the turbine turns correctly
The cutting unit is noisy	Reduce the feeding speed
	Carry out the lubrication
	Disassemble the blade and remove the material residues
	Check the silencer
The cutting unit starts slowly, works intermittently or does not start	Check the wear of the gear pair
	Check the pneumatic circuit integrity
	Adjust the working pressure at 6 bar

EN
12

16. SPARE PARTS / EXPLODED VIEW

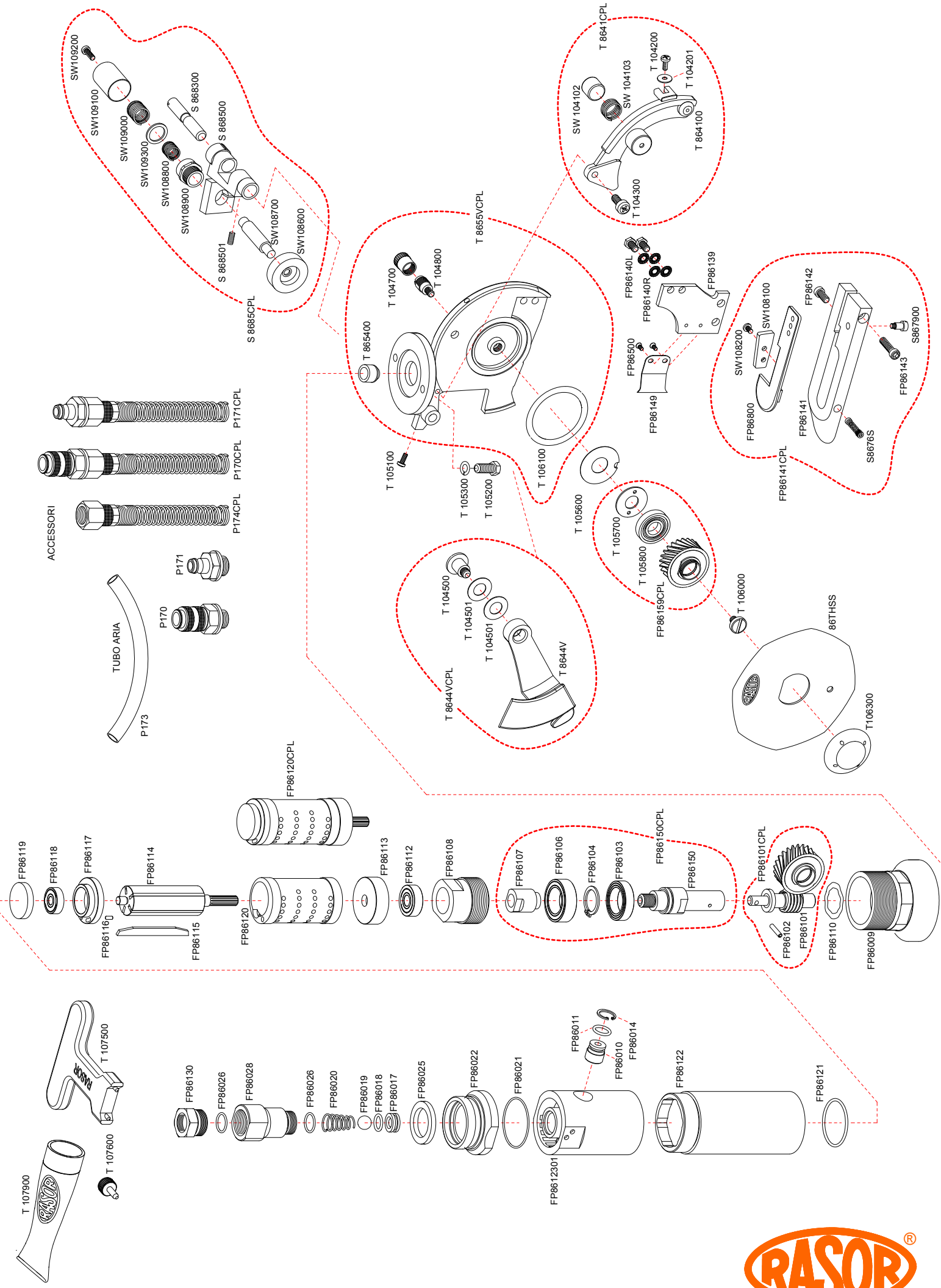
CODE	DESCRIPTION	CODE	DESCRIPTION	CODE	DESCRIPTION	CODE	DESCRIPTION
86THSS	8-SIDE BLADE 86 mm, H.S.S. STEEL	FP 86113	FRONT FLANGE	FP 86159CPL	COMPLETE RING GEAR	T104300	4MA SCREW FIXING THE REAR GUARD
FP 86009	COUPLING FLANGE	FP 86114	ROTOR	FP 86500	SCREW FIXING SPRING LOCKING THE THREAD	T104500	SCREW FIXING THE FRONT GUARD
FP 86010	PISTON GUIDE	FP 86115	ROTOR BLADE	FP 86800	COUNTERBLADE	T104501	PAIR OF CONVEX WASHERS
FP 86011	PISTON GUIDE O' RING	FP 86116	POSITIONING PIN	S86765	SPRING WITH DOWEL	T104700	GREASER CAP
FP 86014	STOP RING	FP 86117	REAR FLANGE	S867900	COUNTERBLADE SUPPORT FIXING SCREW	T104800	GREASER
FP 86017	VALVE	FP 86118	REAR FLANGE BEARING	S868300	SHARPENING PIN	T105100	SHARPENER PIN FIXING SCREW
FP 86018	VALVE O' RING	FP 86119	REAR FLANGE CAP	S868500	SHARPENER SIMPLE BLOCK	T105200	SUPPORT FIXING SCREW
FP 86019	STEEL BALL	FP 86120	CYLINDER	S868501	DOWEL FIXING SHARPENER BLOCK	T105300	WASHER
FP 86020	SPRING	FP 86120CPL	COMPLETE TURBINE	S8685CPL	COMPLETE SHARPENER BLOCK	T105600	SHAVING WASHER
FP 86021	SILENCER HOUSING O'RING	FP 86121	O'RING GASKET	SW104102	OILER RING	T105700	BEARING FIXING RING NUT
FP 86022	SILENCER HOUSING	FP 86122	MOTOR FRAME	SW104103	OILER SPRING	T105800	GEAR RING BEARING
FP 86025	BRONZE SILENCER FILTER	FP 8612301	CONTROL HEAD	SW108100	HARD METAL COUNTERBLADE	T106000	LEFT SCREW FOR GEAR FIXING
FP 86026	REDUCTION UNIT O' RING	FP 86130	1/4" CONNECTOR WITH FILTER	SW108200	COUNTERBLADE FIXING SCREW	T106100	SUBBLADE RING
FP 86028	REDUCTION UNIT	FP 86139	STEEL FOOT	SW108600	EMERY TYPE Ø 25 x9 x 6	T106300	BLADE FIXING RING NUT
FP 86101	GEAR WORM SCREW	FP 86140L	FOOT FIXING SCREWS	SW108700	EMERY PIN	T107500	BLADE DISASSEMBLING WRENCH
FP 86101CPL	COMPLETE PAIR OF GEAR	FP 86140R	TOOTHED WASHER	SW108800	EMERY SPRING Ø 11 mm	T107600	BLADE LOCKING DRIFT
FP 86102	ELASTIC PIN	FP 86141	ALUMINIUM SIMPLE BASE	SW108900	SHARPENER BUSH	T107900	LUBRICATING GREASE
FP 86103	SHAFT FRONT BEARING	FP 86141CPL	ALUMINIUM COMPLETE BASE	SW109000	EMERY SPRING Ø 6 mm	T864100	REAR GUARD
FP 86104	SNAP RING	FP 86142	BASE FIXING SCREW 10 mm	SW109100	SHARPENER CAP WITH BEARING	T8641CPL	REAR GUARD SET
FP 86106	SHAFT REAR BEARING	FP 86143	BASE FIXING SCREW 18 mm	SW109200	SHARPENER CAP FIXING SCREW	T8644V	FRONT GUARD
FP 86107	JOINT	FP 86149	SPRING LOCKING THE THREAD	SW109300	STEEL WASHER	T8644VCPL	FRONT GUARD SET
FP 86108	THREADED RING NUT	FP 86150	COUPLING SHAFT	T104200	2.6MA SCREW FIXING THE REAR GUARD	T865400	ANTI-FRICTION BUSH
FP 86110	COMPENSATOR RING	FP 86150CPL	COMPLETE COUPLING SHAFT	T104201	WASHER	T8655VCPL	COMPLETE MOTOR SUPPORT
FP 86112	MOTOR FLANGE BEARING						

ACCESSORIES

CODE	DESCRIPTION	CODE	DESCRIPTION
P169	FLEXIBLE PIPE FITTING Ø 8 mm - 1/4" GAS FEMALE	P171	MALE QUICK COUPLING - 1/4" GAS
P170	FEMALE QUICK COUPLING - 1/4" GAS	P171CPL	MALE QUICK COUPLING - 1/4" GAS (COMPLETE)
P170CPL	FEMALE QUICK COUPLING - 1/4" GAS (COMPLETE)	P173	AIR PIPE Ø 8x6 mm
		P174CPL	COMPLETE COUPLING WITH THREAD - 1/4" GAS



dal 1946



WARRANTY

Razor® Elettromeccanica S.r.l. cutting unit has a 12 month warranty from the date indicated on the last page of this manual, except in case of different written agreements.

The warranty covers all manufacturing and material defects. Replacement and repair operations are covered only if carried out by our company and at our workshop.

In case of returned goods for repair under warranty, **the Customer must always send to Razor® the complete machine. Repairs under warranty of single faulty components are not accepted.**

The material to be repaired must be sent CARRIAGE FREE.

Once the machine has been repaired, it will be sent CARRIAGE FORWARD to the customer. The warranty covers neither technicians' intervention on site nor the machine disassembly from the installation place.

If for practical reasons, one of our technicians is sent to the premises, the customer will be charged the costs plus the travelling expenses.

The warranty does not include:

- ☞ failure caused by wrong use or assembly,
- ☞ failure caused by external agents,
- ☞ failure caused by lack of maintenance or negligence;
- ☞ blades and components subject to wear.

WARRANTY FORFEITURE:

- ☞ In case of arrearage or other breaches of contract,
- ☞ Whenever changes or repairs are carried out on our cutting unit without our prior authorization,
- ☞ Whenever the serial number is tampered with or cancelled,
- ☞ Whenever the damage is caused by improper use, bad treatment, bumps, falls and other causes not due to normal working conditions,
- ☞ Whenever the unit seems tampered with, dismantled or previously repaired by unauthorized staff,
- ☞ In case the cutting unit is used for purposes that are different from the ones described in this manual.

All repair operations carried out under warranty do not interrupt its duration.

All disputes will be settled in the court of justice of Milan (Italy).

We thank you in advance for the attention you will pay to this manual and we invite you to inform us of any change you deem necessary to improve it and make it more complete.

DECLARATION OF CONFORMITY



We hereby certify that the device specified hereunder complies with the requirements of Machinery Directive 2006/42/EC and to technical rulings UNI EN 414:2002, UNI EN ISO 12100-1:2005 e UNI EN ISO 12100-2:2005.

Noise tests have been carried out according to UNI EN ISO 11202.

The cutting unit has been produced according to workmanlike standards.

We declare that the above-mentioned goods comply with the standards in force concerning safety and hygiene at work that can be applied to the material itself (refer to the Local Law); the above-mentioned goods are not included in the goods indicated in annex IV of Machinery Directive 2006/42/EC.

- 1. Category: **CUTTING UNIT**
- 2. Manufacturer: **RASOR®ELETTROMECCANICA S.R.L.**
- 3. Type: **FP861V**
- 4. Serial number:
- 5. Year of manufacture:
- 6. Country of manufacture: **ITALY**
- 7. Additional information:

Date:

Warranty expiry:
12 months invoice date or receipt

RASOR ELETTROMECCANICA S.R.L.
CUTTING EQUIPMENTS



(Signature)



Authorized dealer
(Stamp)